



**Prince Sultan Military College of Health Sciences**  
**VICE DEANSHIP OF POSTGRADUATE STUDIES AND RESEARCH**

## **GUIDELINES FOR DEVELOPING RESEARCH THEMES**

### **Selecting Scientific Research Theme & Cutting the Issue**

Scientific and educational organizations are formed as vehicles to identify appropriate research themes based on the community interests and previous experience.

However, since the College's resources are limited and every theme cannot be studied, it is not sufficient simply to choose an issue or theme and then develop a strategy.

Instead, themes should be chosen on the basis of strategic analysis that determines in advance whether they are feasible and capable.

### **Criteria for Strategic Analysis on What Themes to Study**

*The following criteria should be considered for strategic analysis on what themes should be studied:*

Criteria	
<b>Consistency</b>	Is the proposed research theme consistent with the long-term goals of the College? How will the specific research themes fit within the overall organizational agenda? Will it help to move the next stage of progress?
<b>Growth</b>	Will the research theme help the College and community to grow? The best research themes will attract a broad range of professionals and new members. The involvement of large numbers of people will provide much of the leverage necessary to conduct a thorough research, simultaneously expanding and building new connections and collaboration opportunities.
<b>Education</b>	Will the chosen research theme provide a good health educational experience, developing consciousness, independence, and new skills? Moreover, it should be



Criteria	
	considered that people best learn through action and experience.
<b>Credit</b>	Will the College receive credit for the successful completion of research, improve its credibility, and increase overall visibility? Whereas, College may receive both internal credit and external credit outside.
<b>Resources</b>	How will the research affect College resources? The availability of College resources will definitely affect the outcome of the research. The reverse truth is that both successful and unsuccessful outcomes will have a lasting impact on College resources.
<b>Tactics &amp; Success</b>	Will the research emphasize direct action and produce new knowledge and data that can be used in practice? The best successes in scientific research will be those achieved through the direct action of large number professionals, as well as community contribution where required.
<b>Cutting the Issue</b>	New explorations and knowledge within health sciences, its practical implementation, contribution to community (i.e., Saudis), bringing change and innovation will cut the existing issue(s) and create new opportunities.

## How to Select Scientific Research Theme & Cut the Issue?

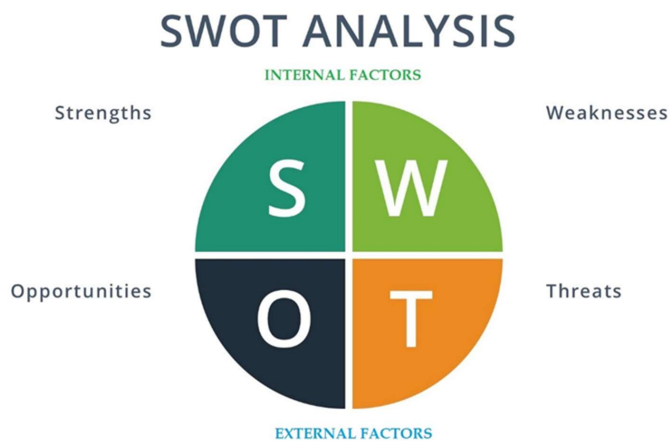
*Without a good strategic thinking, force field analysis, and planning, none of these points is feasible.*

A Force Field Analysis, also known as SWOT analysis is a validated and reliable technique for strategic planning, mapping out the strengths, weaknesses, opportunities, and threats relating to organizations', in this case College and its scientific research objectives.

Once the preliminary concepts and ideas of a research theme has been expressed by involved individuals a practical use of SWOT can be started.



## Selecting Scientific Research Theme & Cutting the Issue



The words **Strengths**, **Weaknesses**, **Opportunities**, **Threats** to be written on the blackboard or four separate papers.

Considering these words as basis, the Strengths, Weaknesses, Opportunities, Threats of each theme should be explained and recorded.

## SWOT Analysis & Selecting Scientific Research Theme

**Strengths & Weaknesses** refer to factors internal to College and can be considered ideal for continues control.

**Opportunities & Threats** refer to factors in the external environment, such as budget cut, community contribution, governmental support, collaboration with other organizations.

In summary, before starting any research and choosing a theme, such factors should be considered as assets and strengths, challenges, barriers, liabilities, threats (external), information/data required, opportunities, and next steps. This comprehensive approach to environmental analysis and policy advocacy will provide robust criteria for making informed planning decisions on choosing the next theme of scientific research.



## Vision 2030 & Health Care System

- **Corporatization: Efficient & High-Quality Health Care**
- **Provide the Education That Builds Our Children's Fundamental Characters & Establish Empowering Health & Social Care Systems**

Commented [aw1]: o be removed, since within the text there is no need to show the logo.

Commented [JVQ2R1]:

Commented [JVQ3R1]:

### PSMCHS & Vision 2030

To explain the practical implementation of a research theme identification, we can consider one of the goals of Vision 2030.

Establish Empowering Health and Social Care Systems	
<b>Consistency</b>	This theme is consistent with the long-term goals of the College and specific research themes fit within the overall organizational agenda. Findings of this research can lead College to the next step of progress.
<b>Growth</b>	The choice of precise scientific research theme will help the College and community to grow, thus attracting a broad range of professionals and new members. This will also contribute to the Saudi Vision 2030 and Kingdom's progress.
<b>Education</b>	A precise scientific research theme will provide a good health educational experience, developing consciousness, independence, and new skills.
<b>Credit</b>	The College will receive credit for the successful completion of research, improve its credibility, and increase overall visibility. Moreover, this will be both internal credit and external credit outside.
<b>Resources</b>	While choosing a precise theme to contribute to Vision 2030 goal, scientific research team and administration of the College should consider College resources available, pros, and cons.
<b>Tactics &amp; Success</b>	A precise scientific research theme can emphasize direct action and produce new knowledge and data that can be used in practice, thus contributing both to science as a whole, and to Vision 2030.
<b>Cutting the Issue</b>	New explorations and knowledge within health sciences, its practical implementation, contribution to community (i.e., Saudis) will bring changes and innovation, thus will cut the existing issue(s), gaps, and create new opportunities.

### Cutting the Issue

*Once the wider theme has been chosen, SWOT analysis can be made to arrive to a narrow and more feasible research theme that can be conducted by the College staff.*



## Procedures

To collect subjective opinions and judgments from people with different backgrounds can be a wise and results-oriented approach for identifying and assessing key research themes and requirements.

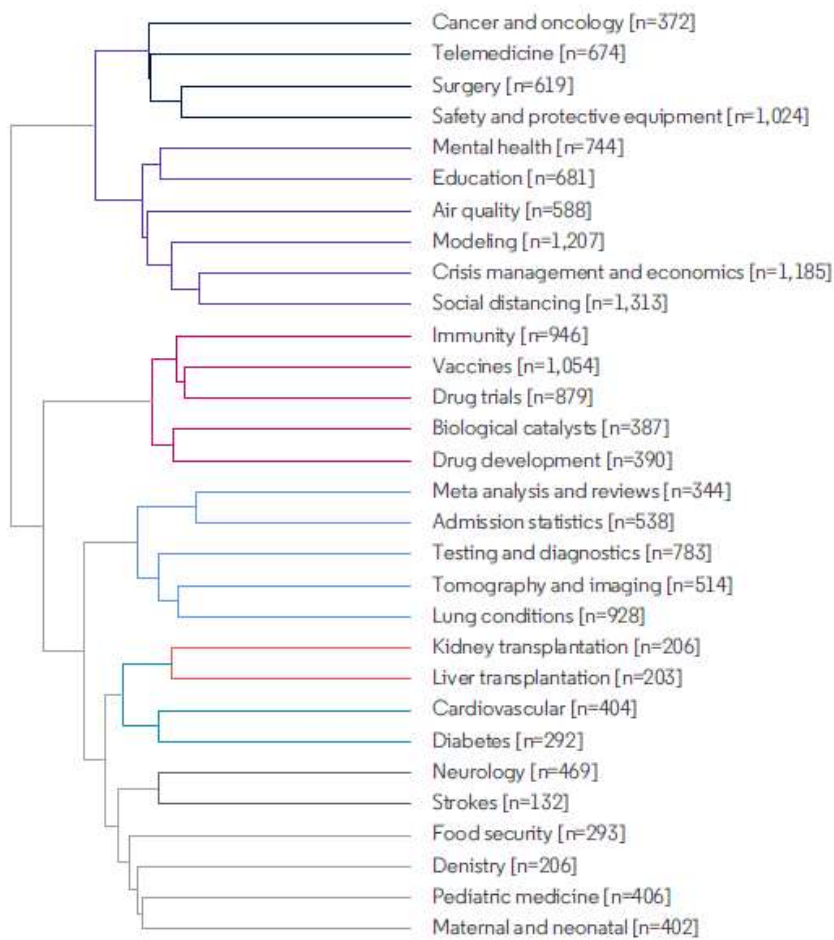
Panel discussion by experts will support broader research focus and allow to assess current understanding of a specific segment.

A structured communication process will utilize all available information, revisit previous experiences and themes already studied by others, support data, and offer an accurate scientific research theme to be investigated and conducted by the College and faculty.

Planning, Coordination, Execution, Collaboration



**Figure 1.** A family tree of 30 research topics detected among 18,183 papers indexed in Web of Science during 2020 and related to coronavirus via searches for COVID-19 or SARS-CoV-2. Topics are signposted with a name-tag derived from the most frequent terms in that set of documents and shown alongside the number of papers in each set (n). Groups of similar topics are clustered together and denoted using different colors on the tree.



Source: The Annual G20 Scorecard – Research Performance 2020. Clarivate 2020.



## References

1. Barry, B.W., 1997. *Strategic planning workbook for nonprofit organizations*. Amherst H. Wilder Foundation.
2. Gretzky, W., 2010. Strategic planning and SWOT analysis. *Essentials of Strategic Planning in Healthcare*, pp.91-97.
3. Harris, J., 2005. Scientific research is a moral duty. *Journal of medical ethics*, 31(4), pp.242-248.
4. Miller, M. 1993. Community Organizing. *In a Journey to Justice*. Louisville, Ky.: Presbyterian Committee on the Self-Development of People.
5. Minkler, M. ed., 2005. *Community organizing and community building for health*. Rutgers University Press.
6. Reefke, H. and Sundaram, D., 2017. Key themes and research opportunities in sustainable supply chain management—identification and evaluation. *Omega*, 66, pp.195-211.
7. Saudi Vision 2030. 2020. Vision 2030 & Health Care System. Retrieved from: <https://vision2030.gov.sa/en>.
8. Towne, L. and Shavelson, R.J., 2002. *Scientific research in education*. National Academy Press Publications Sales Office.